



**S&C HOMES**  
THE KEY TO LEGACY



**CENTURY 21.**  
Tri-Cities



## STANDARD FEATURES

# S&C HOMES

THE KEY TO LEGACY

### CONSTRUCTION & GENERAL FEATURES

- **Foundation:** Crawlspace
- **Framing:** 2x6 exterior walls (16" on center), 2x4 interior walls (24" on center)
- **Insulation:** R-21 batt in walls, R-49 cellulose in ceilings
- **Drywall:** ½" in main areas; " in fire-code areas; orange peel texture with bullnose corners
- **Ceilings:** Skip-troweled texture
- **Heating & Cooling:** High-efficiency heat pump
- **Electrical:** 200 amp service panel
- **Water Heater:** Hybrid heat pump

### EXTERIOR FEATURES

- **Roof:** 30-year composite shingles
- **Siding:** HardiPlank or upgraded stucco
- **Windows:** Clay-colored double-pane vinyl with screens
- **Entry Door:** Insulated fiberglass
- **Garage:** Drywalled, opener with 2 remotes and keypad
- **Utilities:** 2 hose bibs & 2 weatherproof outlets
- **Concrete:** Broom-finished
- **Patio:** Open or covered (per plan)
- **Landscaping:** Front yard sod, planter beds, UGS, edging; full yard upgrade available

### INTERIOR FEATURES

- **Ceilings:** 9' standard; vaulted in select areas (per plan)
- **Fixtures:** Brushed nickel or black plumbing & lighting
- **Technology:** Pre-wired for telephone & cable
- **Doors & Hardware:** Two-panel, with matching finishes
- **Flooring:** LVP in wet areas; carpet with 8 lb pad elsewhere
- **Storage:** Wood shelving; bi-pass bedroom closet doors
- **Paint:** One color (Sherwin Williams); upgrades available

### KITCHEN FEATURES

- **Sink:** Stainless steel
- **Cabinets:** Maple, soft-close, raised or shaker panel
- **Appliances:** SS electric range (gas optional), dishwasher, microwave, disposal
- **Counters:** Quartz with 6" tile backsplash; upgrades available
- **Pantry:** Wood shelving

### Bathroom Features

- **Sinks:** White oval
- **Cabinets:** Same as kitchen
- **Counters:** Laminate with 6" tile backsplash; upgrades available
- **Accessories:** Towel bars, rings, toilet paper holders
- **Showers & Tubs:** Master with walk-in fiberglass (tile wall); main bath with fiberglass tub/shower

## CENTURY 21<sup>®</sup>

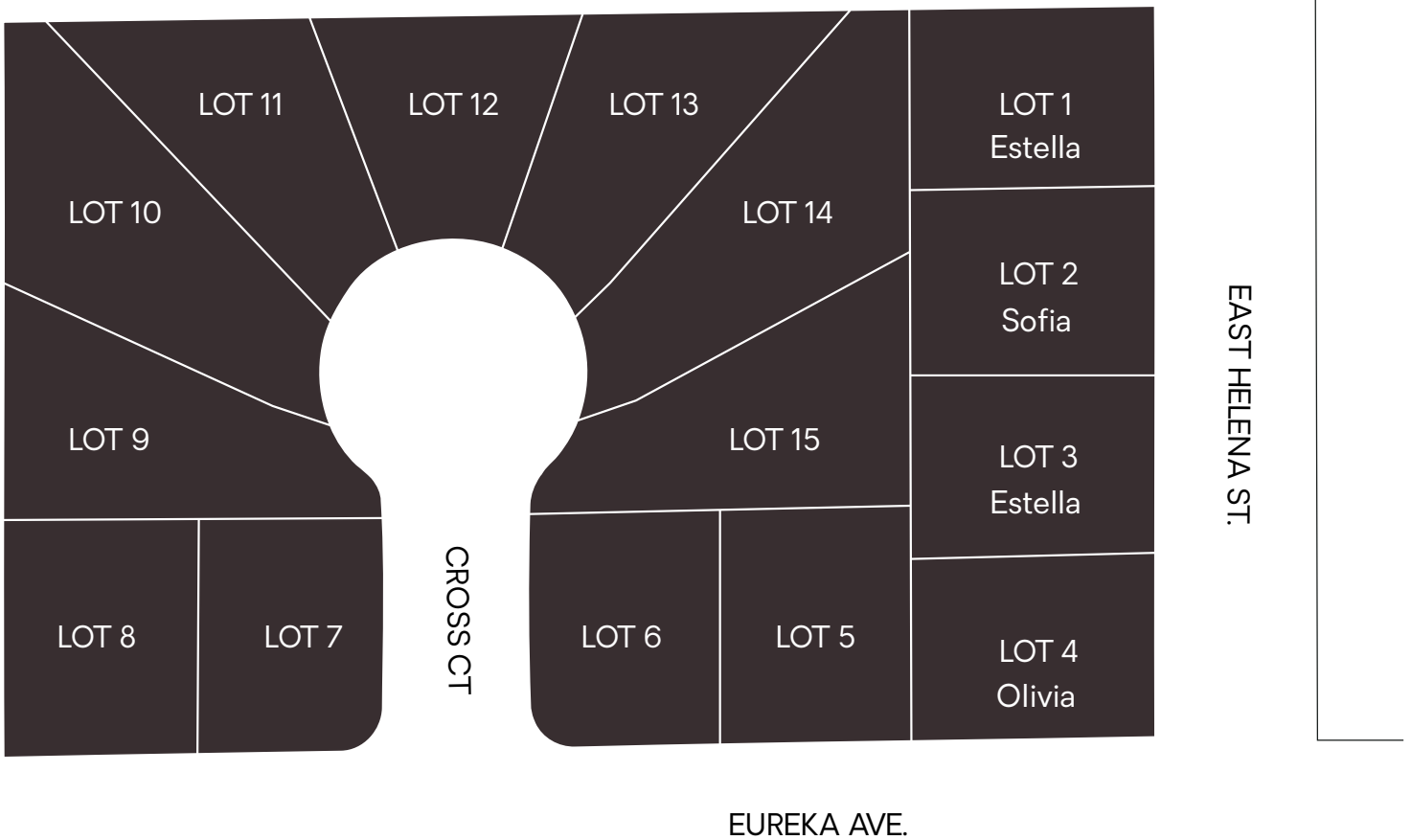
Tri-Cities





**S&C HOMES**  
THE KEY TO LEGACY

# VIDA I



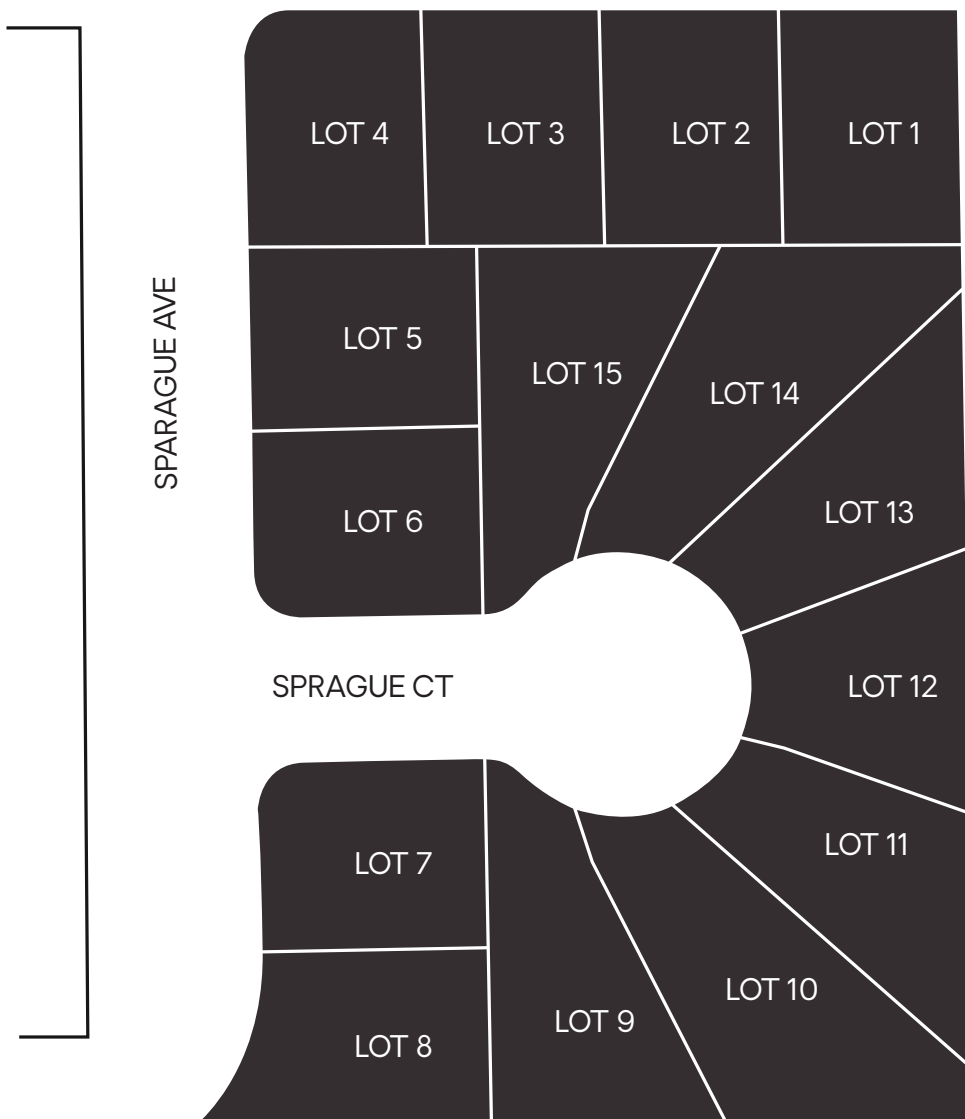
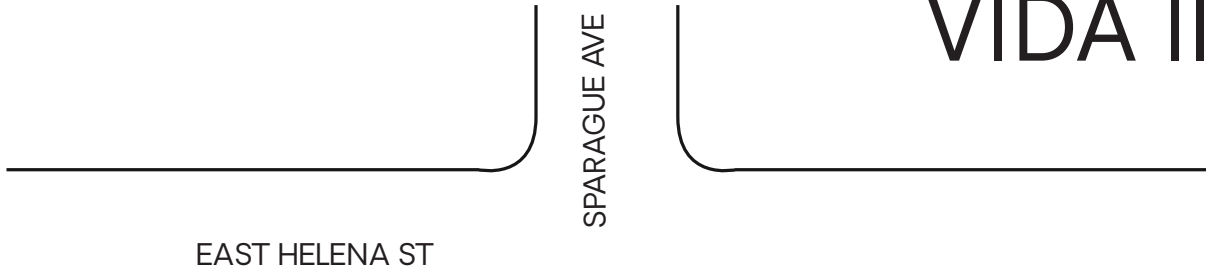
**CENTURY 21<sup>®</sup>**  
Tri-Cities





**S&C HOMES**  
THE KEY TO LEGACY

# VIDA II



**CENTURY 21**  
Tri-Cities





**S&C HOMES**  
THE KEY TO LEGACY

## COMMUNITY FLOOR PLAN FEATURES & PRICING

Story	Floor Plan	Square Footage	Garage	Pricing
1	Victoria	1307	2	\$399,900
1	Estella	1427	2	\$409,900
1	Olivia	1599	2	\$439,900
1	Sofia	1682	3	\$469,900
1	Clara	1800	3	\$489,900

**NEW HOMES  
STARTING AT  
\$399,900**

Prices reflect base prices and are subject to change without notice. Lot premiums and options may add to the total of your new home. The plan drawing and renderings represent an artist's conception and are not intended to be an exact representation and is not intended to show specific detailing. Plans remain subject to change without notice. Drawings are not to scale. All measurements are approximate.

**CENTURY 21**  
Tri-Cities



# VICTORIA



3



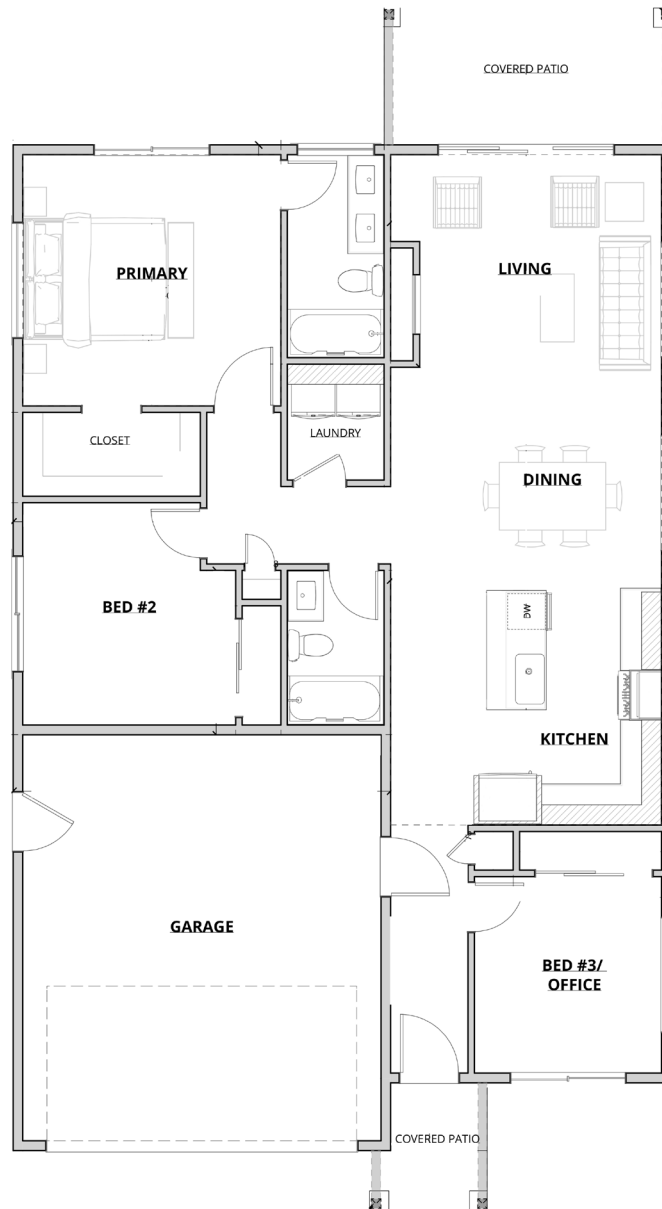
2



2



1307



**S&C HOMES**  
THE KEY TO LEGACY

**CENTURY 21.**  
Tri-Cities

S&C HOMES reserves the right to modify floor plans, designs and prices. Dimensions and square footage are approximate. Photos may show upgrades provided at additional cost. Photos could be of previously built homes.



# ESTELLA



3



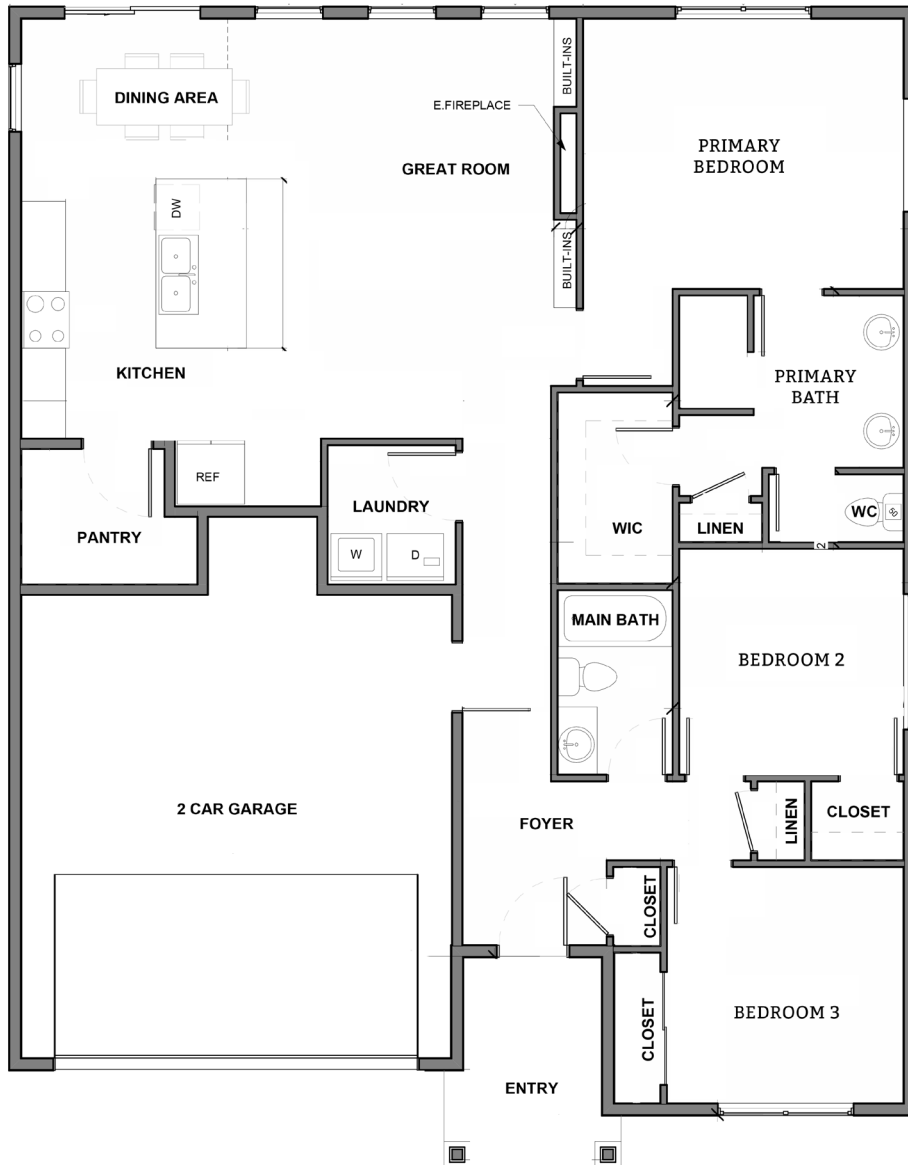
3



2



1427



**S&C HOMES**  
THE KEY TO LEGACY

**CENTURY 21.**  
Tri-Cities

S&C HOMES reserves the right to modify floor plans, designs and prices. Dimensions and square footage are approximate. Photos may show upgrades provided at additional cost. Photos could be of previously built homes.



# OLIVIA

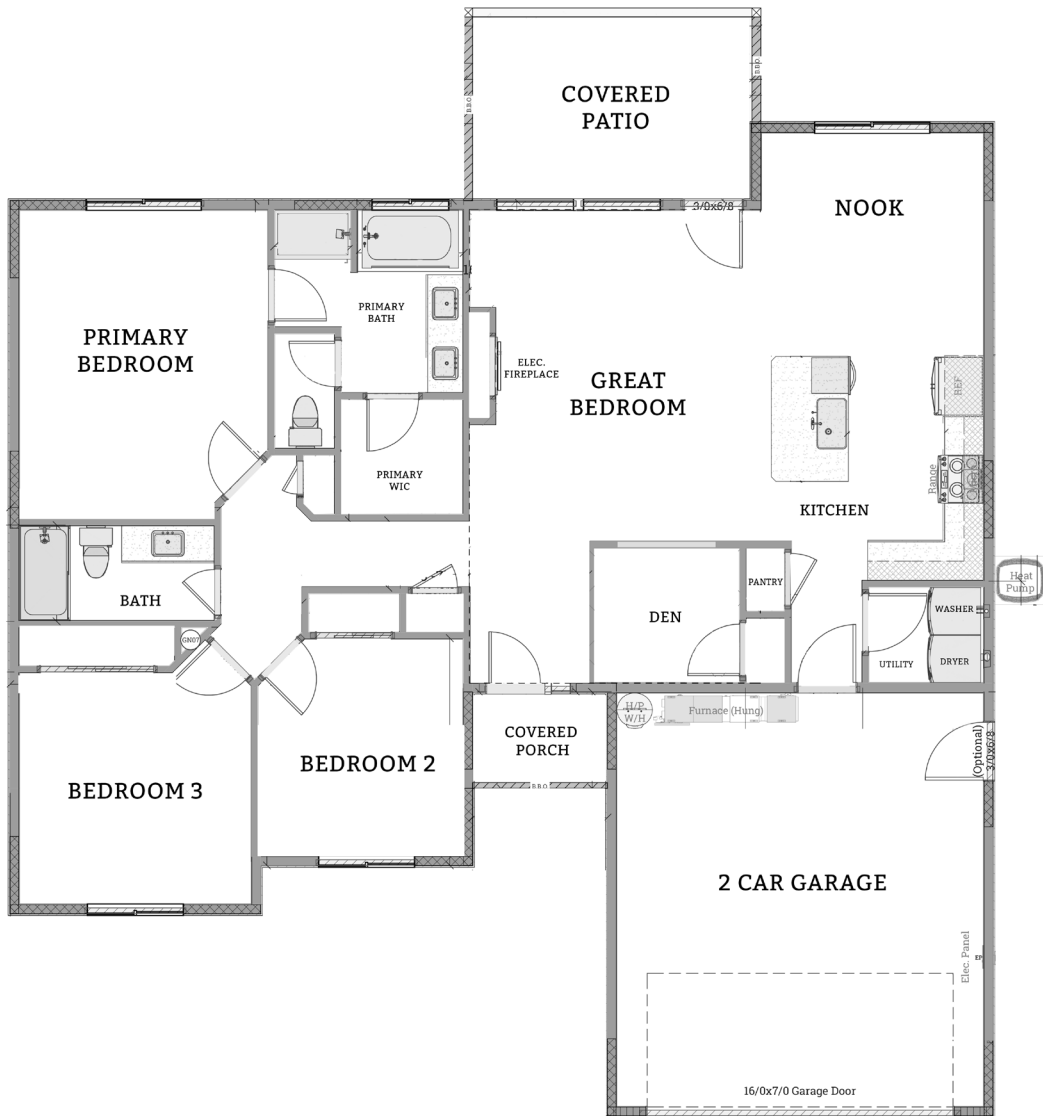


3 

2 

2 

1599 




S&C HOMES reserves the right to modify floor plans, designs and prices. Dimensions and square footage are approximate. Photos may show upgrades provided at additional cost. Photos could be of previously built homes.



# SOFIA

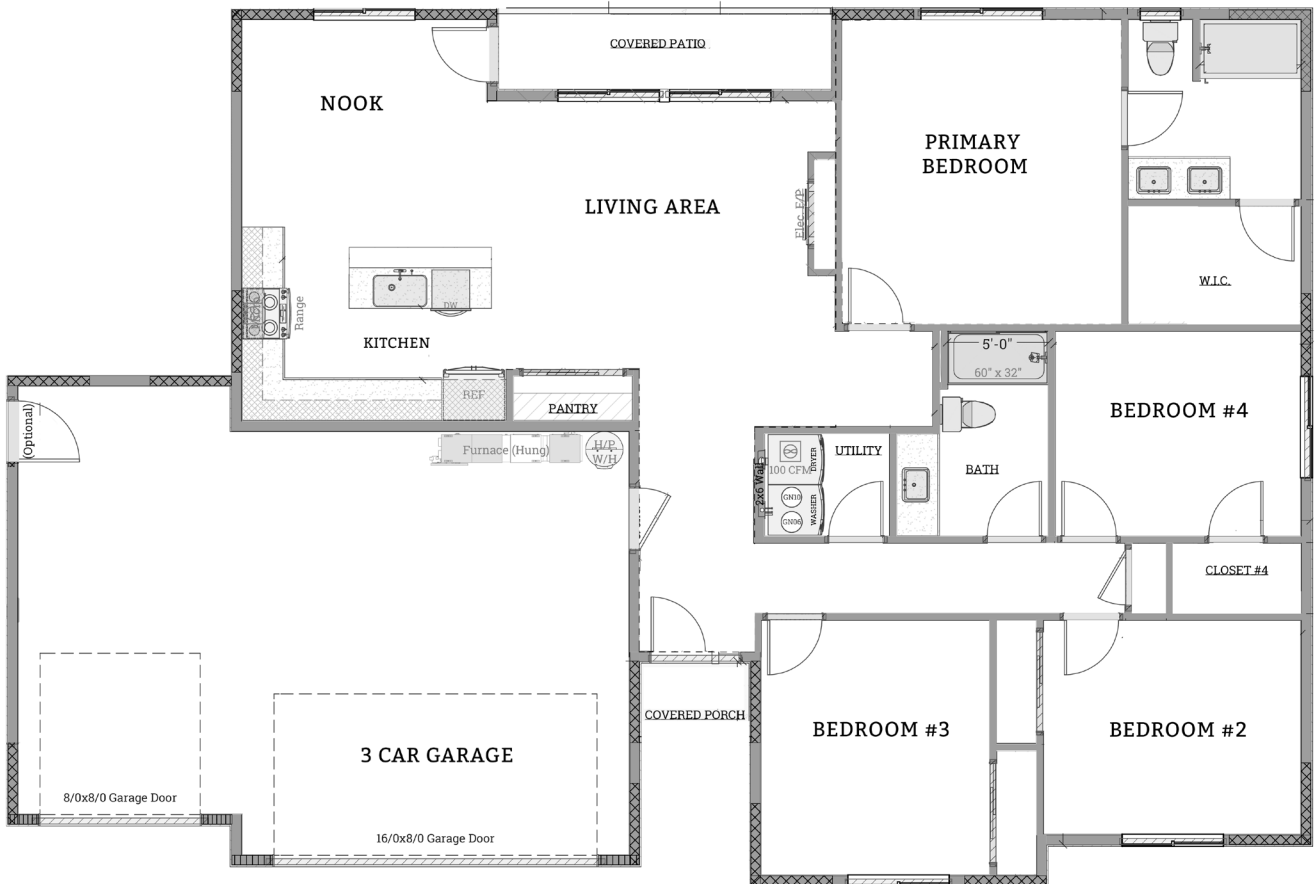


4 

2 

3 

1685 



S&C HOMES reserves the right to modify floor plans, designs and prices. Dimensions and square footage are approximate. Photos may show upgrades provided at additional cost. Photos could be of previously built homes.



# CLARA



4



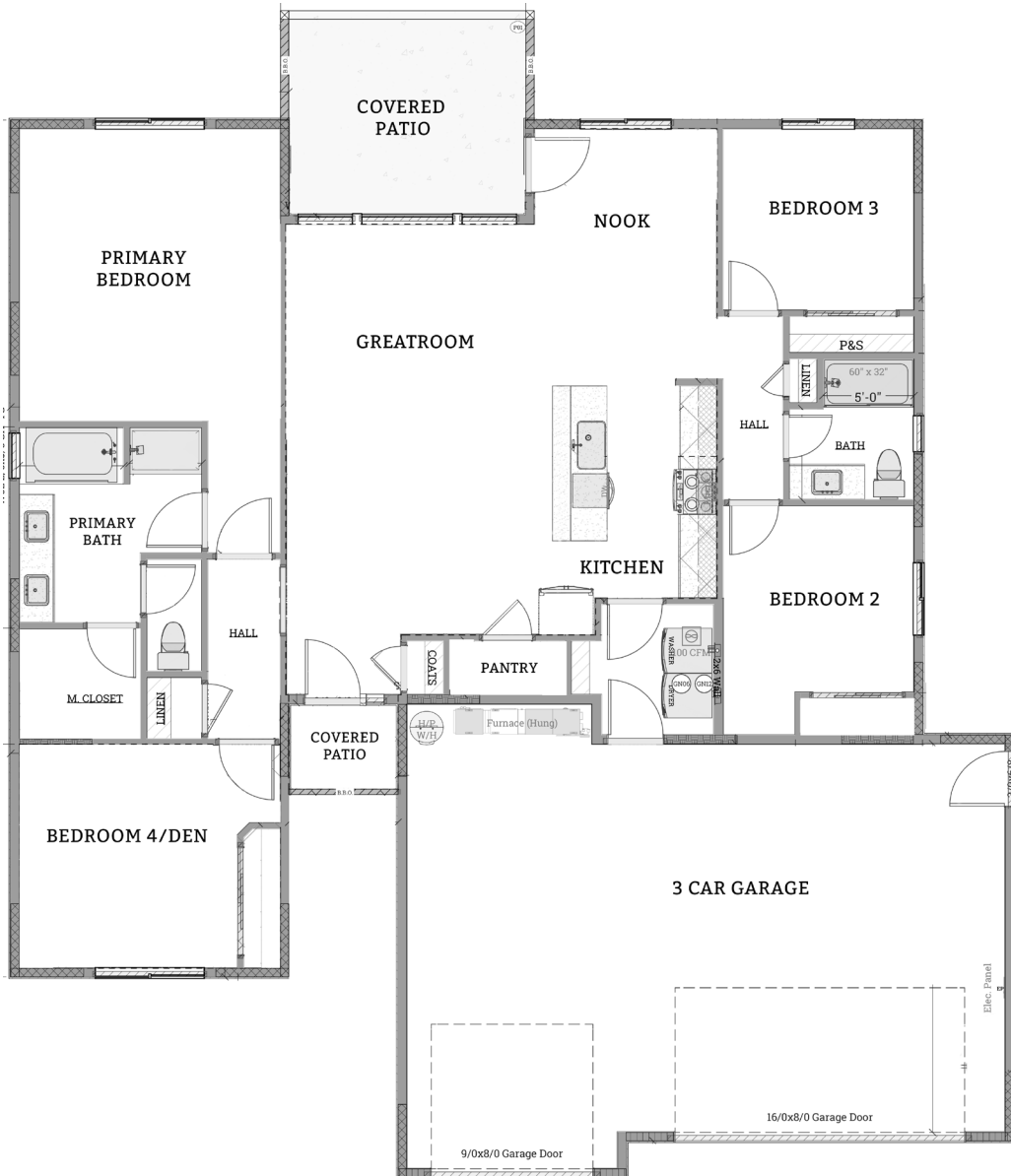
2



3



1800



**S&C HOMES**  
THE KEY TO LEGACY

**CENTURY 21.**  
Tri-Cities

S&C HOMES reserves the right to modify floor plans, designs and prices. Dimensions and square footage are approximate. Photos may show upgrades provided at additional cost. Photos could be of previously built homes.

